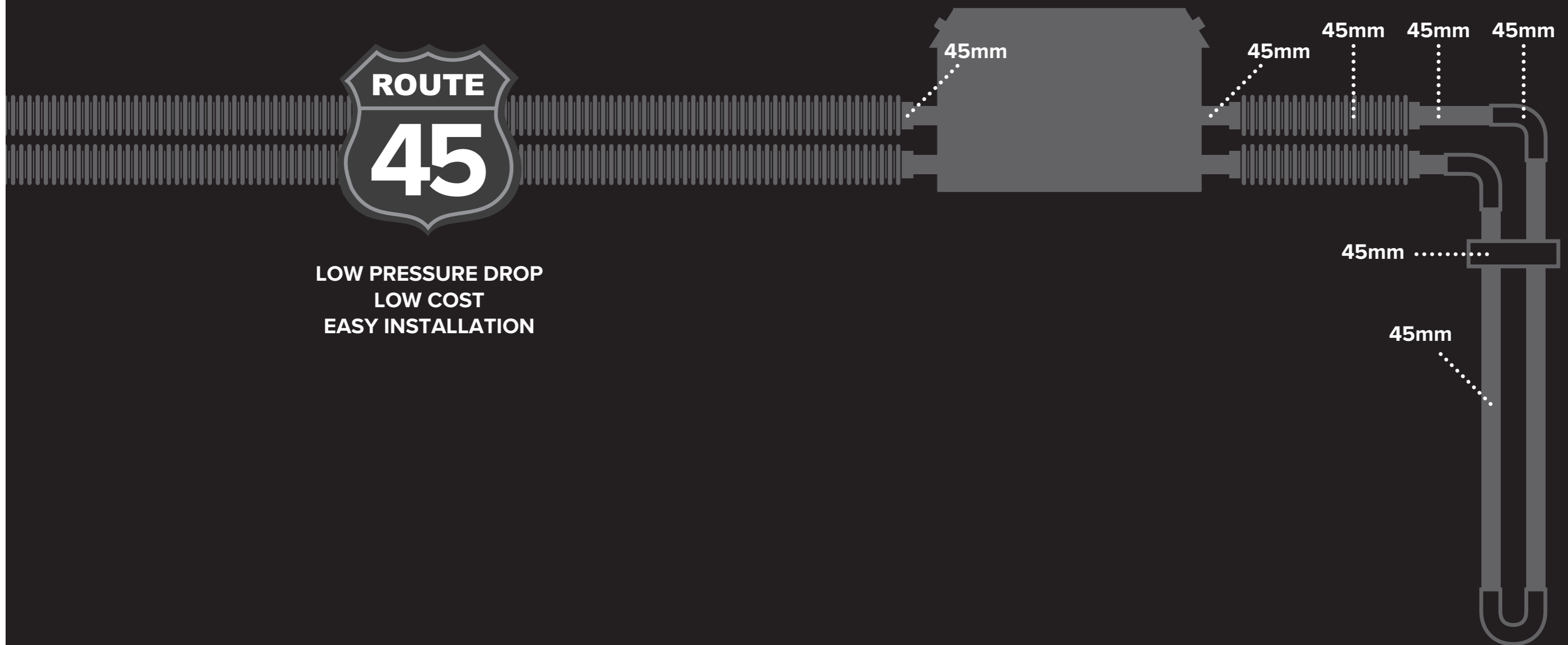




## FROM GROUND TO HEAT PUMP



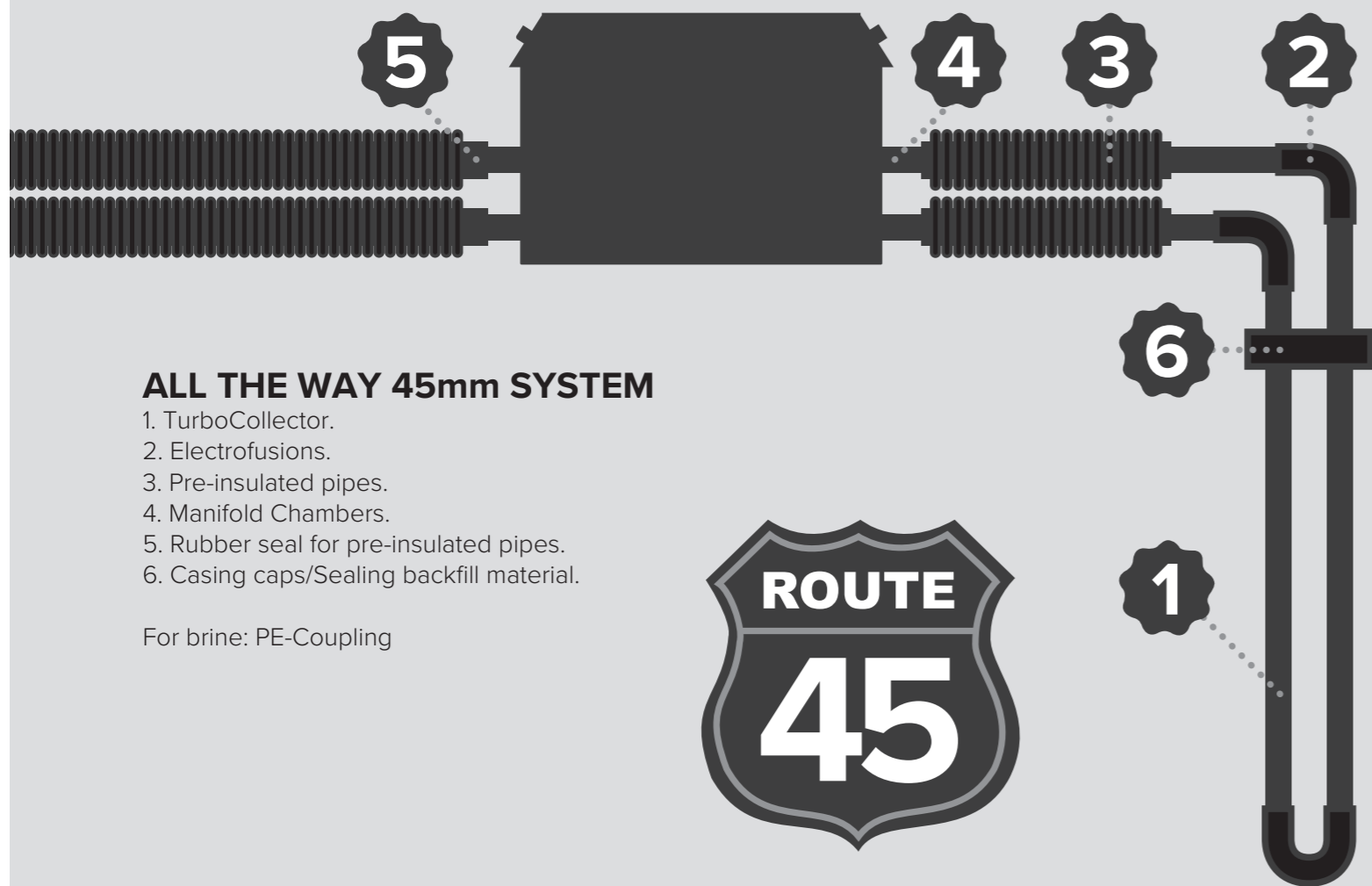
LOW PRESSURE DROP  
LOW COST  
EASY INSTALLATION

**MuoviTech®**

MuoviTech UK, Carr Hall, Whalley Road, Blackburn, Lancashire, BB1 9LJ, UK  
PHONE +44 1706 82 5035 EMAIL sales@muovitech.com WEB www.muovitech.com

**MuoviTech®**

BEST IN EARTH.



### ALL THE WAY 45mm SYSTEM

- 1. TurboCollector.
- 2. Electrofusions.
- 3. Pre-insulated pipes.
- 4. Manifold Chambers.
- 5. Rubber seal for pre-insulated pipes.
- 6. Casing caps/Sealing backfill material.

For brine: PE-Coupling



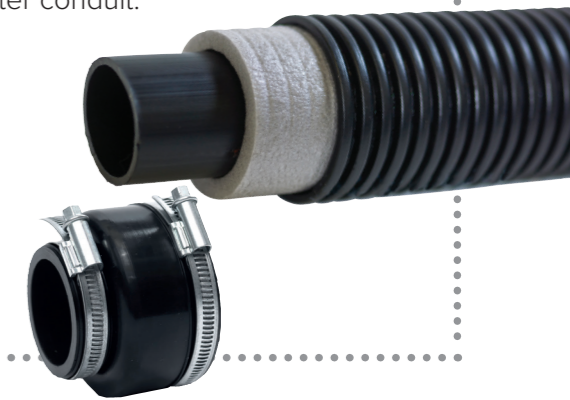
## GROUND PIPES 45mm

**Pre-Insulated pipes 45/75mm.** EPE foam for insulation and corrugated outer conduit. 6m and 50m. SDR17.

**Joint sealing 45/75mm** for pre-insulated pipes 45mm.

**Ground pipes 45mm** SDR11 SDR13,6 and SDR17. Smooth or Turbo-design.

| Product             | Dimension |
|---------------------|-----------|
| Pre-Insulated pipes | 45/75mm   |
| Joint sealing       | 45/75mm   |
| Ground pipe         | 45mm      |



## MANIFOLD CHAMBERS 45mm

All of our chambers can use 45mm connecting pipes. For a easy installation and less pressure drop in the system.

| Product           | Connections |
|-------------------|-------------|
| Manifold chambers | 45mm        |



## TURBOCOLLECTOR 45mm

TurboCollector is our patented premium collector. With benefits like lower borehole resistance at low flow. 50-500 meter. SDR11, SDR13,6 and SDR17.

**TC 45**

TURBO COLLECTOR®



| Product        | Dimension |
|----------------|-----------|
| TurboCollector | 45mm      |

## ELECTROFUSION 45mm

We provide a wide range of electrofusions in 45mm. For 40V and 230V systems. SDR 11. Made according to EN 12201.



| Product                | Dimension                   |
|------------------------|-----------------------------|
| Electrofusion straight | 45/40, <b>45/45</b> , 45/50 |
| Electrofusion angle    | 45/40, <b>45/45</b> , 45/50 |

## CASING CAP 45mm

Hardened composite plastic with synthetic compression rubber and stainless steel screws. Composite with 1 rubber seal. Thickness 25mm. 2 holes for collectors 45mm and an extra hole for diverting artificial water, soldering or welding for any pump. Seals against casing pipe and collector when packaging expands. Withstand 3 bar of artesian water pressure.



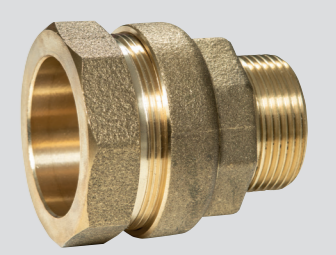
## SEALING 45mm

Sealing backfill material rubber easily mounted on the collector at the desired length to limit the part of the borehole to be filled with bentonite. The seal is made of rubber and enclosed stainless steel hose clamps. For borehole 115mm.



## PE-COUPLING 45mm

Coupling made of brass. Used to fill the system with brine. Fits 45mm pipe and 1-1 / 4" pipe threads.



| Product     | Dimension                       |
|-------------|---------------------------------|
| Casing cap  | 45mm collector / borehole 115mm |
| Sealing     | 45mm collector / borehole 115mm |
| PE-coupling | 45mm / 1-1/4"                   |