

**MuoviTech®**  
BEST IN EARTH.

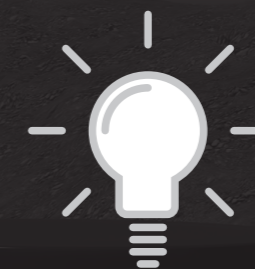
# BE BRIGHT!

**BRIGHT CONNECTION**  
Powered by MuoviTech Manifold Chamber Dept.

**NEW MANIFOLD CHAMBER CONCEPT**

For easy installation with the right components for a cost-effective price and minimal maintenance.

Main pipes, connections, valves and flow meters are pressure tested at 5 bar for 10 min to ensure the system is safe.



# BRIGHT CONNECTION

Powered by MuoviTech Manifold Chamber Dept.



**MuoviTech®**

MuoviTech UK, Carr Hall, Whalley Road, Blackburn, Lancashire, BB1 9LJ, UK  
PHONE +44 1706 82 5035 EMAIL sales@muovitech.com WEB www.muovitech.com



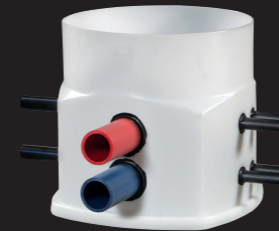
# BRIGHT CONNECTION

Powered by MuoviTech Manifold Chamber Dept.



WHITE INSIDE PROVIDES  
LIGHTER INSTALLATION

## MANIFOLD CHAMBERS



**DN650**  
UP TO 3 COLLECTORS.  
SIMPLE MANIFOLD CHAMBER.



**DN850**  
UP TO 10 COLLECTORS.  
MAIN PIPES 125MM.



**DN1200**  
UP TO 20 COLLECTORS.  
GREAT CAPACITY FOR  
BIG PROJECTS.

## INCLUDED AS STANDARD



**PLASTIC LID**  
AS STANDARD FOR ALL  
CHAMBERS.



BALANCING VALVE  
TACOSSETTER HYLINE **DN32**.

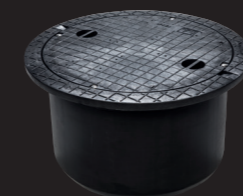


BALL VALVE **DN32**.



BLEED VALVE IN  
PLASTIC **DN25**.

## ACCESSORIES



COMPOSITE LID FOR **1.5 TONS**  
WITH **EXTENSION RING**



CAST IRON LID FOR  
**40 TONS 640MM.**



NC FLOW VALVE BRASS  
**DN25 - DN32 - DN40**



CUSTOMIZED FOR  
EACH PROJECT.

CONTACT US FOR MORE ACCESSORIES: [info@muovitech.com](mailto:info@muovitech.com)